



Branch Name	Fine Biwako I
Address	2891-19, Mizuhocho Kitagawa, Moriyama-shi, Shiga, 524-0102
Telephone	Tel. 077-585-5941 Fax. 077-585-5905
Homepage	http://www.hotel-fine.co.jp/hotel/f-biwako1/

Access	From Nearby Station: JR Kosei Line Katata Station	<ul style="list-style-type: none"> ●By bus: 8 mins to Biwako-Ohashi Higashizume Bus Stop. 7 minutes' walk from there to the hotel. Cost: 250 yen. ●By taxi: 11 mins to the hotel. Cost: 1,650 yen.
	From Moriyama Station	●By bus: 24 mins to Biwako-Ohashi Higashizume Bus Stop. Cost: 490 yen.
	From Kyoto Station	●By JR Kosei Line: 24 mins to Katata Station. Cost: 410 yen.
	From Shin-Osaka Station	●By JR Kyoto Line & Kosei Line: Take the JR Kyoto Line to Kyoto Station. Change trains to Kosei Line, get off at Katata Station. Traveling for 44 mins. Cost: 1,140 yen.
	From Osaka Station	●By JR Kyoto Line & Kosei Line: Take the JR Kyoto Line to Kyoto Station. Change trains to Kosei Line, get off at Katata Station. Traveling for 49 mins. Cost: 1,140 yen.
	From Kansai International Airport	<ul style="list-style-type: none"> ●By Kansai Airport Limousine: 88 mins to Kyoto Station Hachijo-guchi. Cost: 2,550 yen. ●By JR Haruka rapid train: 75 mins to Kyoto Station. Cost: 3,370 yen.
	From Osaka International Airport	●By Osaka Airport Limousine: 50 mins to Kyoto Station Hachijo-guchi. Cost: 1,310 yen.
	By Car	Refer to the web site below. From Osaka https://goo.gl/maps/h0K16 From Kyoto https://goo.gl/maps/VJK3L

※Taxi fee are approximate.

Lodging Facilities	Total guest rooms : 19 Parking lot : 25 To lodge : Stay overnight, day use
--------------------	--

Hotel Services	24 hour Front Desk, 24 hour Room Service, Complimentary High-Speed Wireless Internet, Hotel guests are entitled to free parking. We are pleased to assist you with your luggage handling and storage.
----------------	---

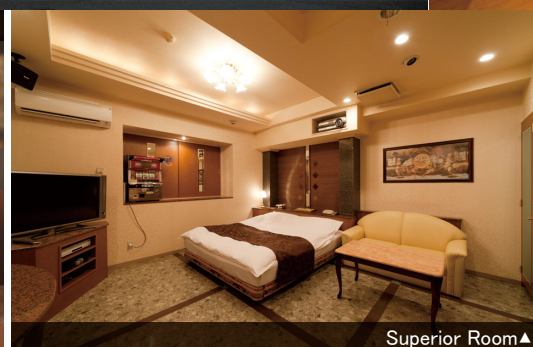
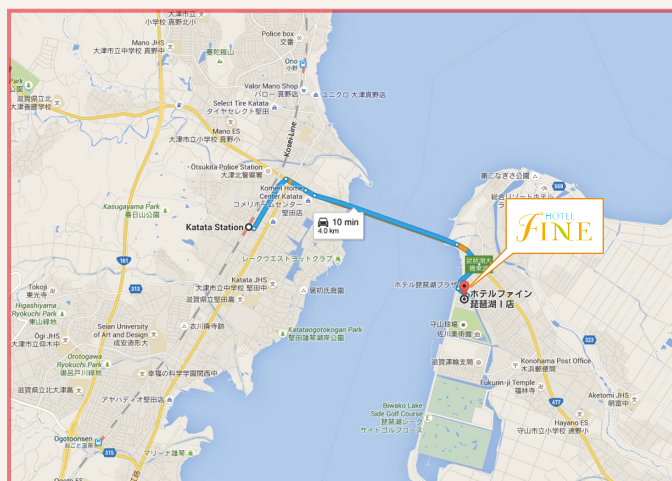
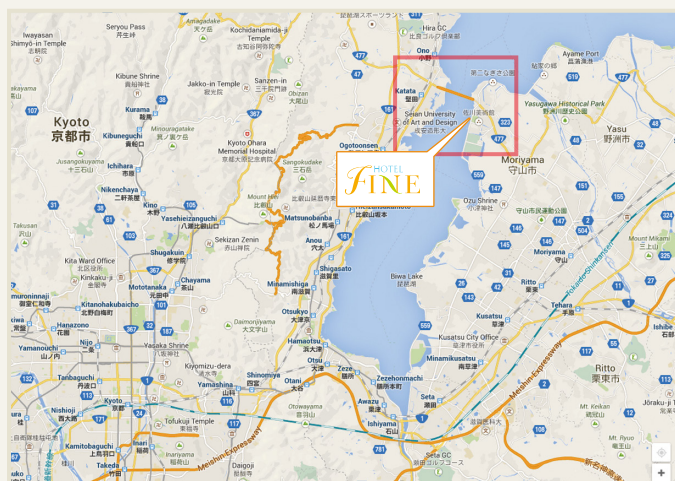
Facility	<ul style="list-style-type: none"> •Projector •DVD player •Game Equipment •LCD TV •Refrigerator •Massage Chair •Handy Massager •Mini-Bar •Steam Sauna •Hydro System Bath •Bathroom television •Bathroom Floor Heater •YUSEN •KURUKURU Hair dryer
----------	--

Amenity (Free)	<ul style="list-style-type: none"> •Shampoo •Conditioner •Body soap •Hair Spray •Tooth Brush •Razor •Comb •Shower Cap •Cosmetic
----------------	--

Rental (Free)	<ul style="list-style-type: none"> •Hair dryer •Steamer •Organization Composition •Aroma diffuser •Video Game Machine (Play Station, Wii, Others)
---------------	--

Guest Room	All Double Rooms ※including tax and service charge.			
	Room Category	Floor Space	Bed Size	Lodging charges
	Superior	35㎡	King(1820×1950)	¥7,600～
	Standard	33㎡	King(1820×1950)	¥7,200～

Access Map



▲ Night Scene

▲ Superior Room